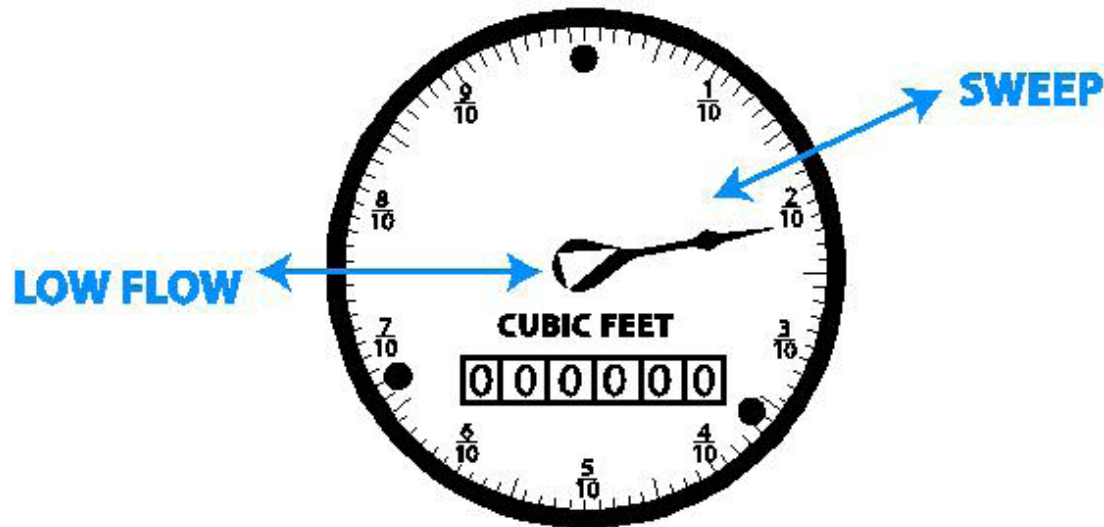


## Leak Detection:

Your water meter is a very helpful device. It can assist you to in finding plumbing leaks as well as provide information about how much water you have recently used.

To check for a leak, turn off all faucets and water-using devices (such as dishwashers and washing machines). Go to your water meter and make a mark on the location of the sweep hand.



Wait 15 minutes and look at the water meter dial again. If the sweep hand has moved, you have water being used somewhere on your property, which may indicate a leak. The triangle located on the sweep is a low flow indicator, found on all newer meters. The indicator rotates when even a small amount of water passes through the meter. The most common areas for leaks include toilets, faucets, plumbing joints and sprinkler controls.

## Check for a leaky or running toilet:

Place a dye tablet or a few drops of food coloring into the toilet tank. If color appears in the bowl without flushing, there is a leak that should be repaired. Be sure to flush the toilet to remove the food coloring after your test is complete.

## Fix Leaky Faucets and Plumbing Joints

If a faucet drips after it has been turned off firmly, the washer is likely worn out and needs to be replaced. Fixing a leaky faucet may save up to 20 gallons of water per day.

## Monitor Sprinkler Controllers

Sprinkler controllers/timers should be reviewed and modified on a monthly basis. Test your system to check run times and look for leaky valves and broken sprinkler heads. By adjusting sprinkler heads that are misaligned and irrigating the sidewalk or driveway you may save up to 500 gallons of water a month.